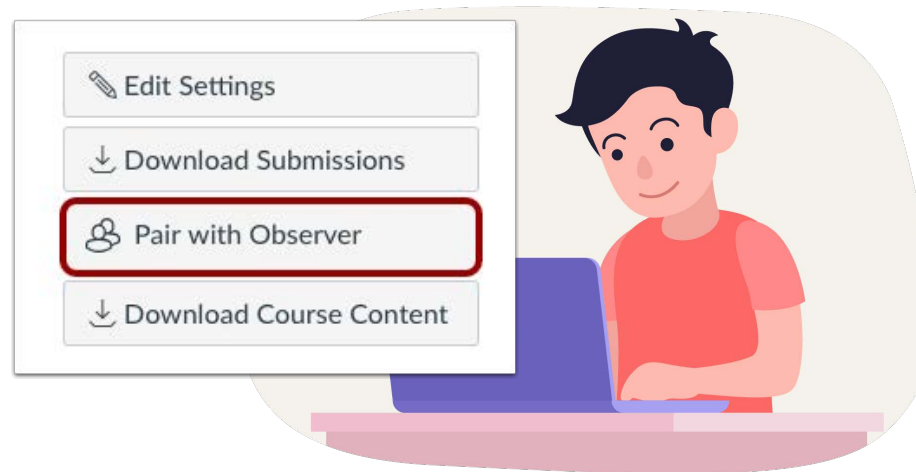




How do I create an account in the Canvas Parent app on my Android or IOS device?

In the Canvas Parent app, you can create a Canvas observer account to view student course information. If you already have an account, you can log in to the Parent app.

To link yourself to a student, you will need to enter a student-specific pairing code that will link you to the student. Pairing codes are valid for seven days. Students can generate pairing codes from their Account > Settings. Teachers can also generate pairing codes.

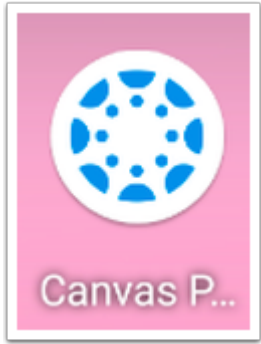


How do I install the Canvas Parent app on my device?



Download the Canvas Parent app from the IOS App Store or the Google Play Store

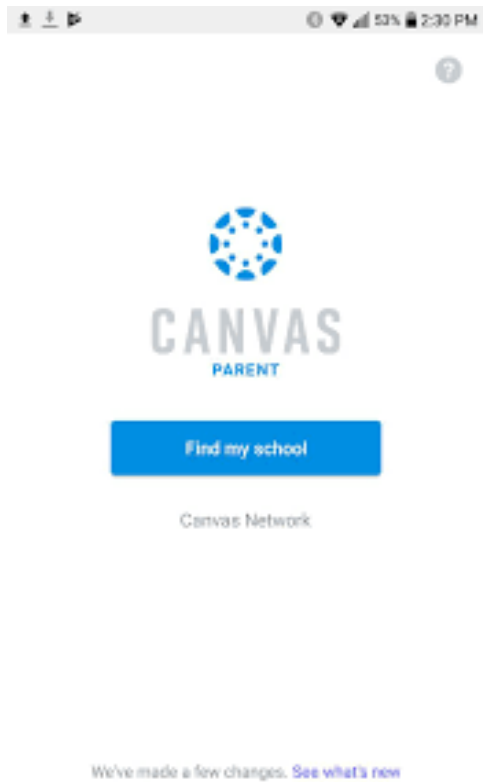




Open App

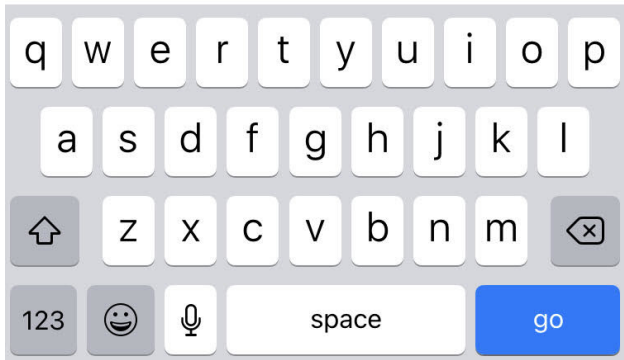
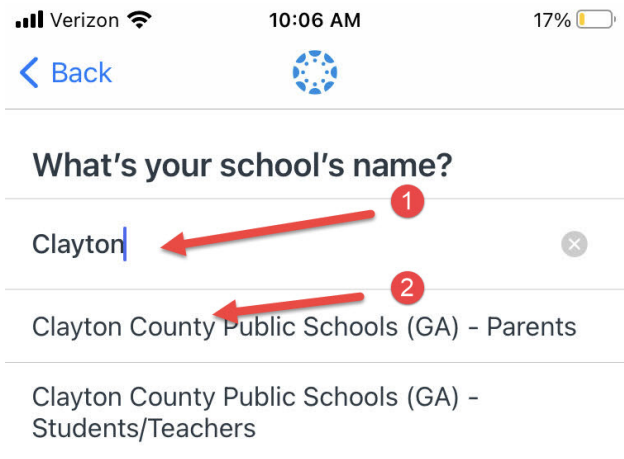
On your mobile device, tap the **Canvas Parent** icon.

Find Your School

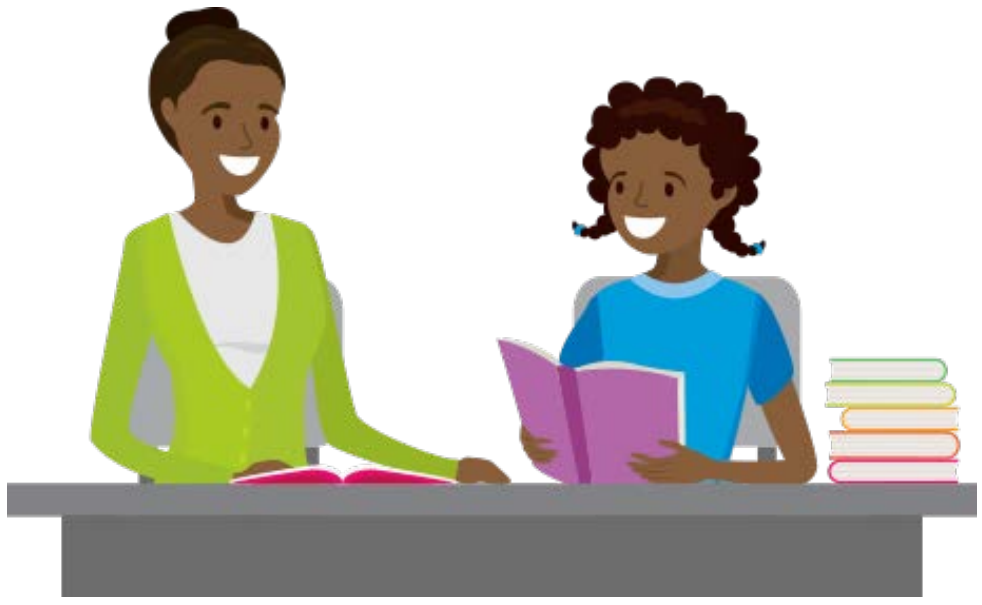


To find Clayton County Public Schools, tap the **Find School** button.

Find Institution



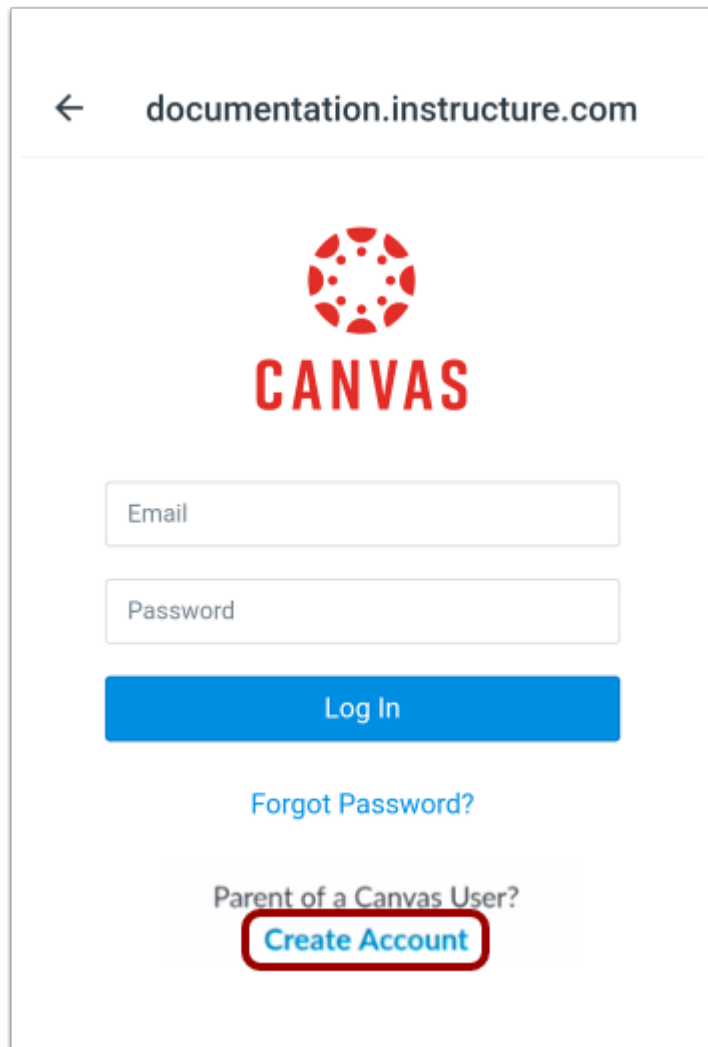
Enter Clayton County Public Schools as your institution in the text field [1]. When the full name appears in the search list, tap the name [2].




You can now log in using your Canvas log in info.

If you do not have an account, please follow the instructions below.

Create Account



← documentation.instructure.com


CANVAS

Email

Password

Log In

[Forgot Password?](#)

Parent of a Canvas User?
[Create Account](#)



To create an account, tap the **Create Account** link.

Parent Signup ×

Your Name

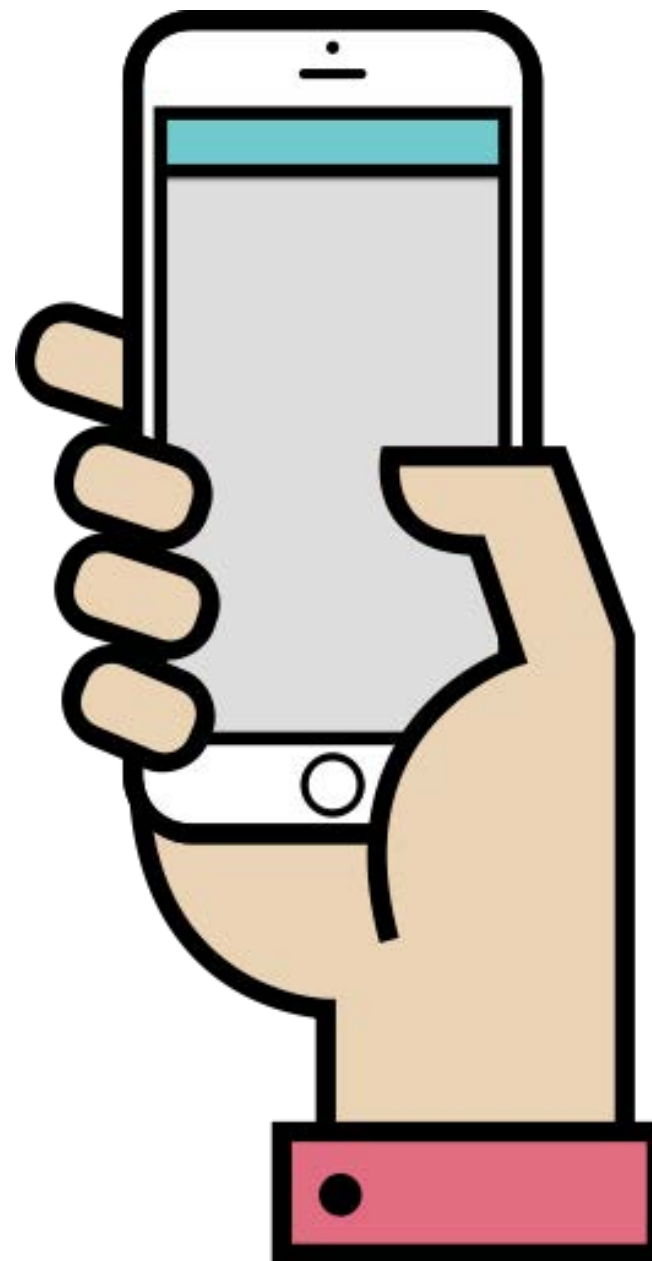
Your Email

Password

Re-enter Password

Student Pairing Code [What is a pairing code?](#)

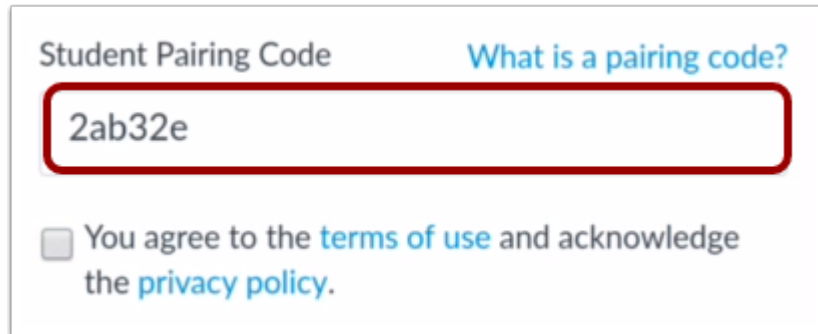
You agree to the [terms of use](#) and acknowledge the [privacy policy](#).



Enter your name in the **Your Name** field [1] and email address in the **Your Email** field [2].

Then create a new password by entering it in the **Password** field [3]. Confirm your new password in the **Re-enter Password** field [4].

Enter Pairing Code



Student Pairing Code [What is a pairing code?](#)

2ab32e

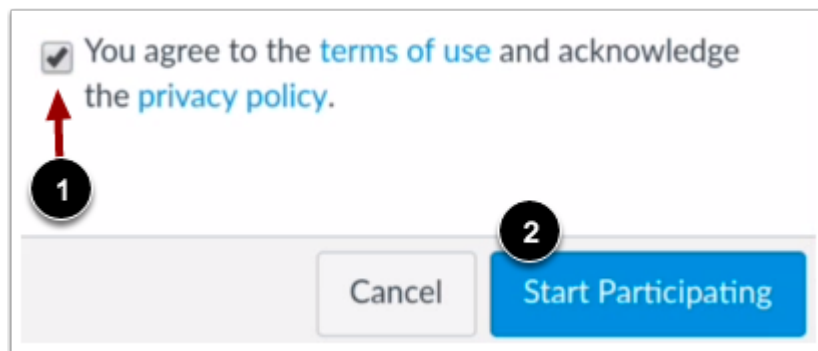
You agree to the [terms of use](#) and acknowledge the [privacy policy](#).

Enter the six-digit alphanumeric pairing code for the student you want to link to in the **Student Pairing Code** field.

Notes:

- Students can generate pairing codes from their Account Settings. Your child's teacher can also generate pairing codes.
- After your account is created, you can link additional students to your account in the Parent app.

Complete Registration



You agree to the [terms of use](#) and acknowledge the [privacy policy](#).

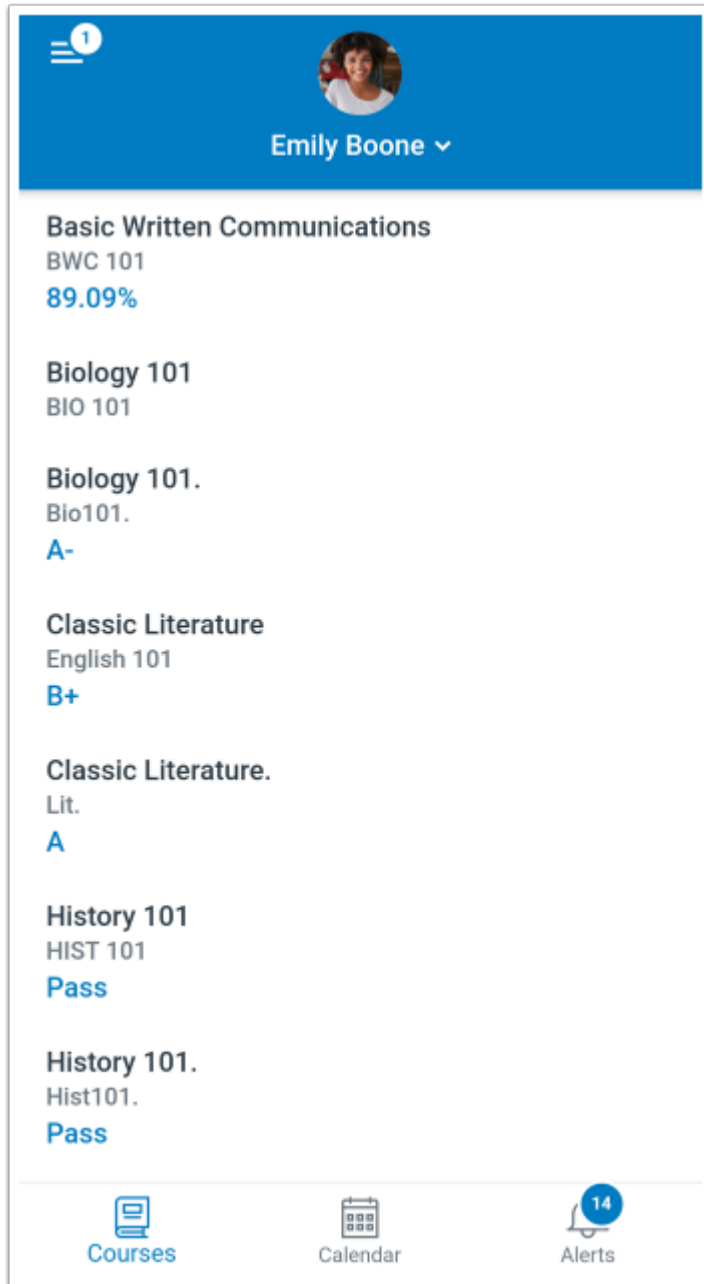
1

Cancel Start Participating

2

To complete your registration, agree to the Terms of Use and Privacy Policy [1]. Then tap the **Start Participating** button [2].

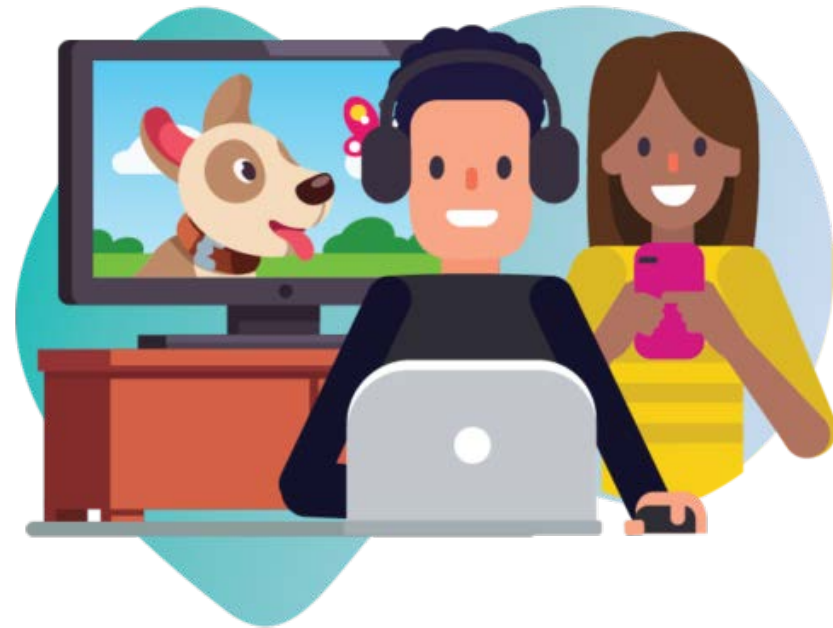
View Parent App



The screenshot shows the Canvas Parent App interface. At the top, there is a blue header with a hamburger menu icon and a notification badge with the number '1'. Below the header is a profile section for 'Emily Boone' with a dropdown arrow. The main content area lists several courses with their IDs and grades:

- Basic Written Communications**
BWC 101
89.09%
- Biology 101**
BIO 101
- Biology 101.**
Bio101.
A-
- Classic Literature**
English 101
B+
- Classic Literature.**
Lit.
A
- History 101**
HIST 101
Pass
- History 101.**
Hist101.
Pass

At the bottom, there is a navigation bar with three icons: 'Courses', 'Calendar', and 'Alerts' (with a notification badge showing '14').



View your linked student in the Canvas Parent app.